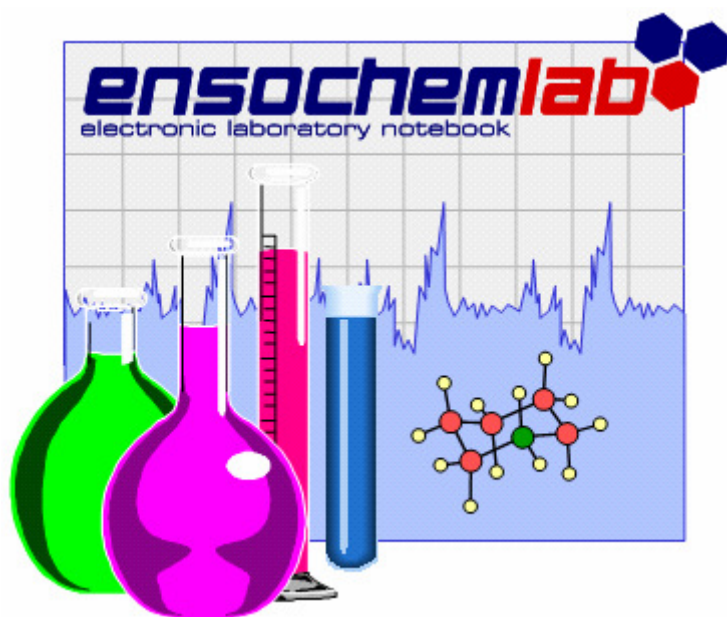


# ensochemLab

Version 6.0

## Client Installation Guide



### enso Software GmbH

Schulhohlstraße 10a

64711 Erbach

Tel +49 (6062) 910888

Fax +49 (6062) 910886

E-mail [Contact@enso-software.com](mailto:Contact@enso-software.com)

## Content

|                            |    |
|----------------------------|----|
| 1. Overview                | 1  |
| 2. Installing the Client   | 2  |
| 3. Uninstalling the Client | 10 |
| 4. Manual Installation     | 11 |

# 1. Overview

---

This guide explains how to install and access the ensochemLab client software. You need a fully installed server installation to do so (see server installation guide).

The installation process is quite simple. However, you need two pieces of information:

- An account with administrative privileges
- The URLs of your server (discussed later)

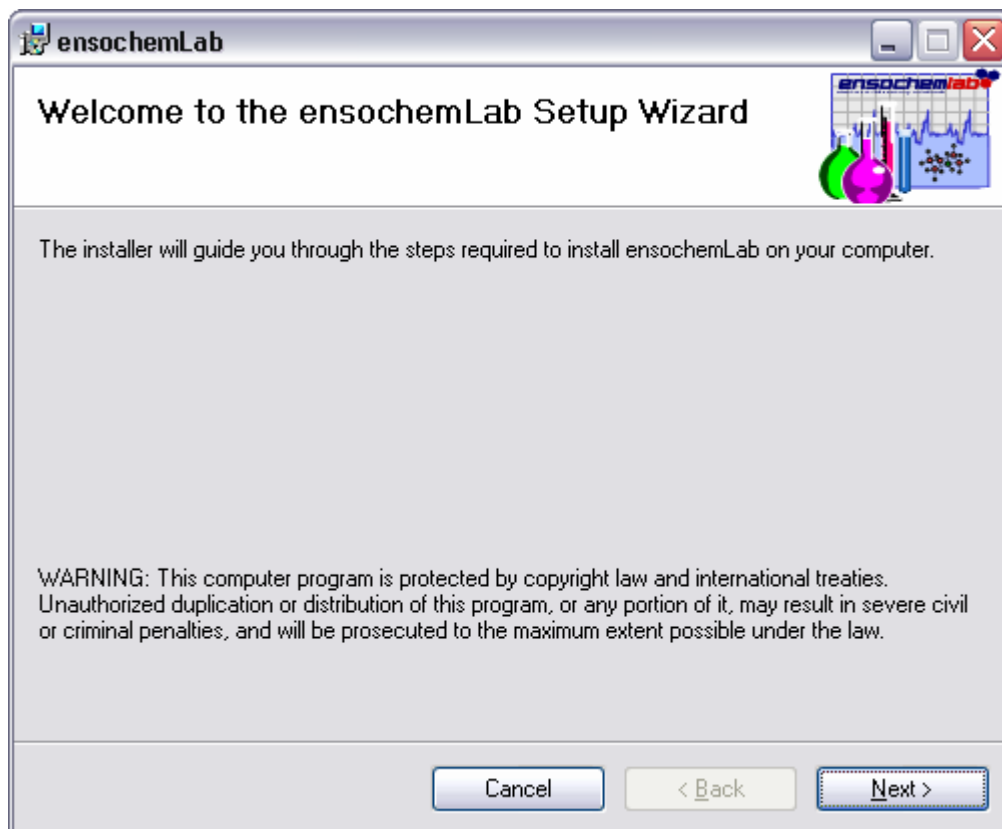
To get this information, please refer to your server administrator or the person who installed the ensochemLab server components. In common, this is even the same person.

## 2. Installing the Client

---

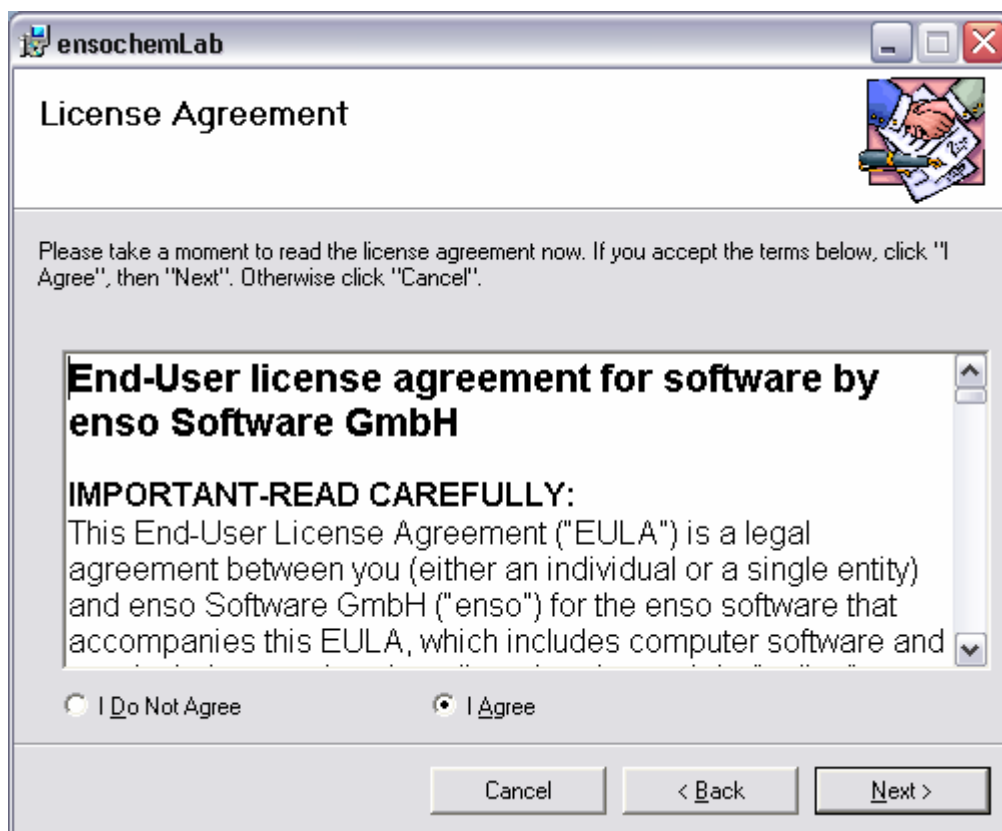
Now, let's take a closer look at the windows client application. The following pages describe how to install all necessary system components and then successfully run ensochemLab.

All work is comfortably done by the client installation program. You can find it on your CD. Please log on as an administrator, execute "Setup.exe" and wait until Setup is initialized and the following dialog appears:



Click on the "Next" button to continue.

Please make sure that you have purchased a legal license for every client computer you want to install ensochemLab on.



Please read the license agreement for the ensochemLab software carefully. If you agree to all the terms in the agreement, please select the checkbox "I agree". Then click on "Next" to continue.



This dialog is used to specify the target directory for ensochemLab's application files. You can type it in or select it from a dialog by clicking on the "Browse" button. To check how much disk space is required and compare it with the free space on your desired disk, click on "Disk Cost".

You can decide if you want to install ensochemLab just for yourself, or if you want to enable all users on this PC to use it. We recommend selecting "Everyone". Otherwise, only people logging on with your account would be able to use ensochemLab.

Having done this, click "Next" to go on to the next page.

On the next page, you have to specify the URL of your server. This URL is very similar to the one of the web edition:

http://<ServerName>/<VirtDir>/ensochemLabService

The placeholders have to be replaced according to this table:

| Placeholder  | Meaning   | Default Value |
|--------------|---|---------------|
| <ServerName> | The full DNS name or IP address of your ensochemLab web server. For <u>local</u> test issues on the server, you can use "localhost". Please note that you have to get the full name to allow remote access to your users. | localhost     |
| <VirtDir>    | Name of ensochemLab's virtual directory. You have specified it during the setup procedure.  | ensochemLab   |

Thus, the URL might be:

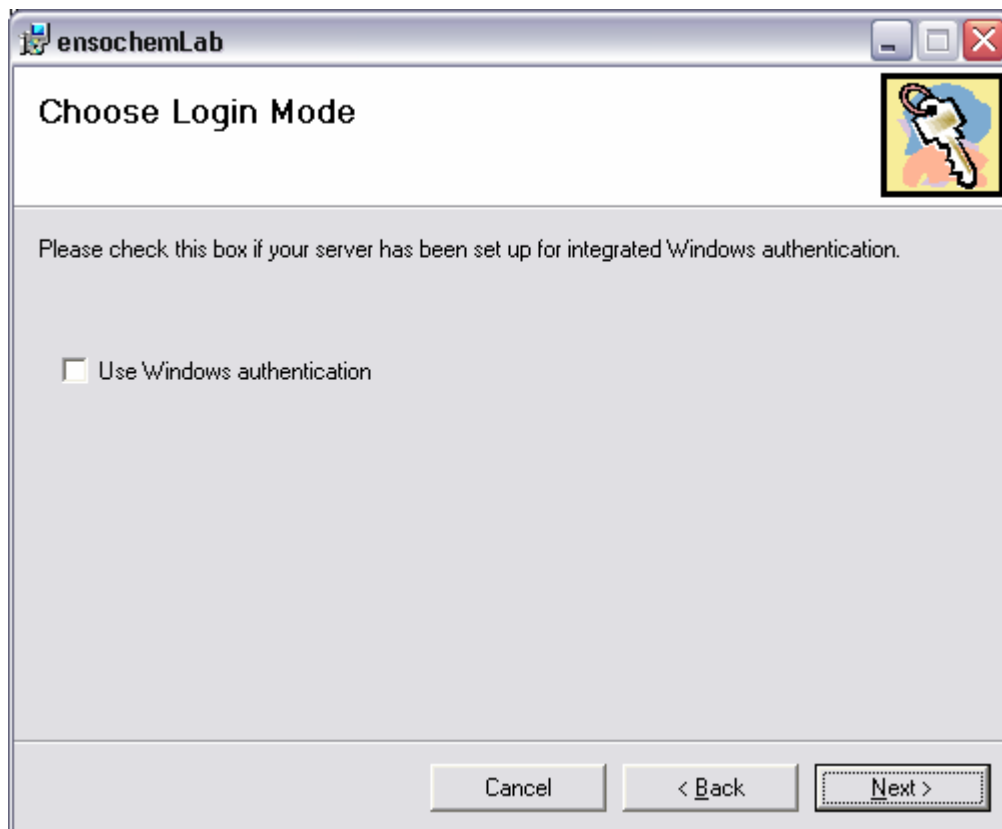
http://localhost/ensochemLab/ensochemLabService

The screenshot shows a dialog box titled "Select Server" from the "ensochemLab" application. The dialog box contains the following text and elements:

- Title bar: ensochemLab
- Header: Select Server
- Graphic: A large "http:" graphic.
- Text: Please specify the URL of your ensochemLab server. This information is provided by your administrator. The placeholder stands for your virtual server directory.
- Label: Server URL:
- Text input field: http://<Virtual Directory>/ensochemLabService
- Buttons: Cancel, < Back, Next >

Fill in the URL and click on "Next" to proceed to the next step.

The following page is only visible for users of ensochemLab Enterprise Edition for Microsoft SQL Server. All other users will skip it and immediately continue to the next one.

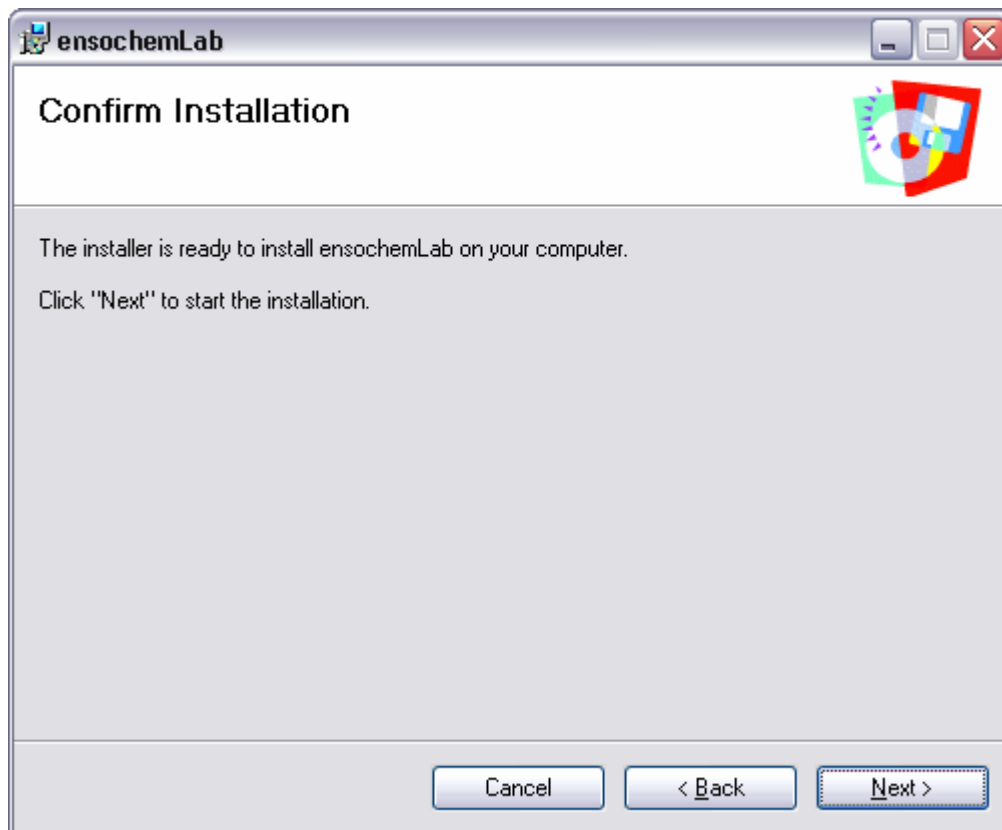


On this page, you have to define which authentication mode shall be used for connecting to your ensochemLab database server. If your server has been set up for integrated Windows authentication during setup, please select the checkbox. If on doubt, please contact your system administrator.

Attention: A wrong authentication mode prevents you from logging into your server.

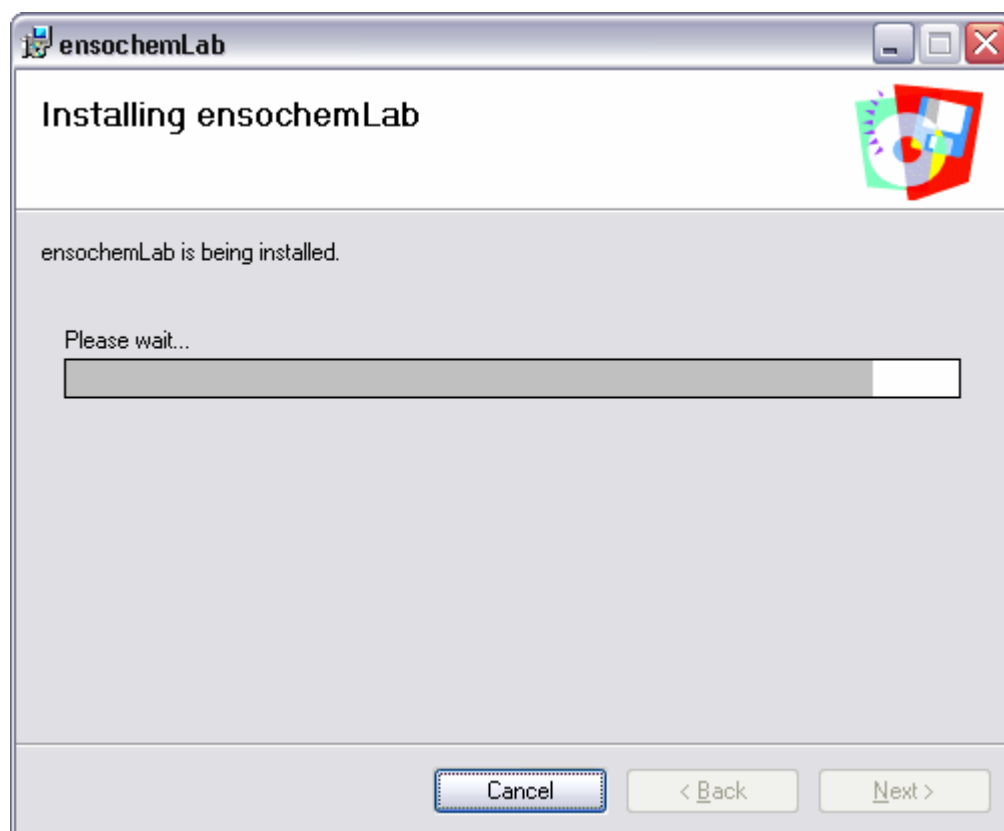


This page shows that setup is ready to install the ensochemLab client software. In order to continue, please either click on "Next" to start the actual installation progress or click on "Back" to change the settings you have entered on the previous pages.

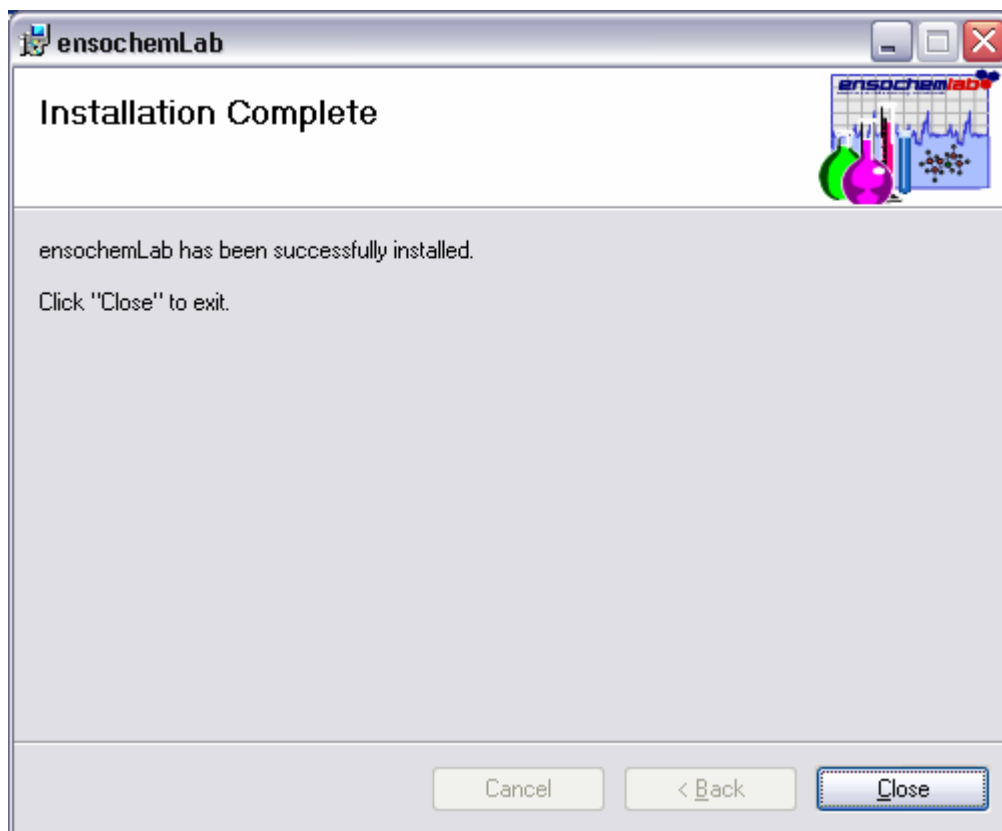


All steps are performed fully automatically without any further information requirement or manual action from the user.

Now please wait while ensochemLab is being installed:



You will be notified when the installation is complete. The following page appears:



Click on "Close" to return to Windows.

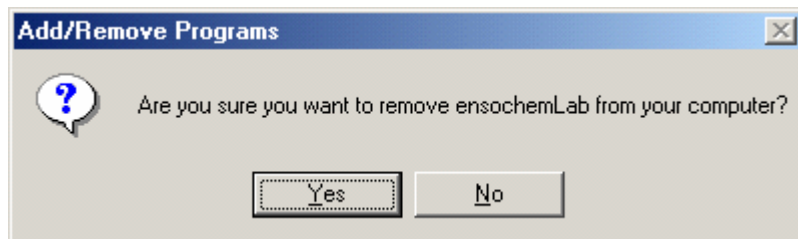
Now you can start ensochemLab by using the shortcut in your start menu. Another shortcut has been installed on your desktop. Just select "Start ensochemLab" and the program will be launched. Note that the first start of ensochemLab will take some time to proceed, because internal tasks have to be completed.

Please refer to the user's guide to learn how to use ensochemLab. There is another important fact to be discussed in this document: Uninstalling ensochemLab.

## 3. Uninstalling the Client

---

To remove ensochemLab's windows client application, go to Control Panel and then double-click on "Add/Remove Programs". In the list, select ensochemLab and click on "Remove". Setup initializes and appears like this:



Click on "Yes" to proceed. The application will be uninstalled and removed from the list.

There is no special remark to indicate that all work has been done properly. If no message is shown, Setup was successful.

## 4. Manual installation

---

Beside the automatic installation via the installation program described in chapter 2, ensochemLab can also be installed manually. However, please note that this procedure is only applicable for versatile users and system administrators. Generally, we recommend using the automatic installation for all users – you should only fall back on this method under very rare circumstances.

For installing ensochemLab, you need administrator privileges on the local computer.

1. Copy the files in “Client\Manual Setup\ensochemLab” including all subfolders to the directory you want to install ensochemLab in.
2. Copy all files in the “Client\Manual Setup\Common Files” directory on your CD into a directory named “enso Shared” beneath the shared files folder on your hard disk. This is “C:\Program Files\Shared Files” on most systems.
3. Modify the “ensochemLab.ini” file in your installation directory. An example can be found further in the text.
  - Enter the URL to your ensochemLab server under [ENSOICHEMLAB] / *Service*.
  - For *NeedLogin* in the [ENSOICHEMLAB] section enter the value 1 if you are using enterprise edition for Oracle or SQL Server with SQL authentication. Enter 0 for a workgroup edition or an enterprise edition for SQL Server with Windows authentication.
  - Change the *Path* value in the [ENSOICHEMLAB] section to meet your shared files path defined before.

Example for an ensochemLab.ini file:

```
[ENSOICHEMLAB]
Service=http://Srv01/ensochemLabService
NeedLogin=<0 for Workgroup Edition or SQL Server Edition with integrated Windows authentication / 1 for
Enterprise Edition>
Path=C:\Program Files\Common Files\enso Shared
```

```
[ASP]
ExperimentData=Server.aspx
UserData=Server.aspx
GeneralData=Server.aspx
BinaryData=Binaries.aspx
```

You should never change the values in the ASP section.

The following files which are installed into the ensochemLab application directory by default are part of used reporting software List & Label. If you wish, you can also install them into any other directory that is included in the search path.

- Cmbr10.dll
- Cmct10.dll
- Cmdw10.dll
- cmll10.dll
- Cmll10bc.llx
- Cmll10ex.llx
- cmll10ht.llx
- Cmll10ob.llx
- Cmll10oc.llx
- Cmll10pw.llx
- Cmll10xl.dll
- cmll1000.chm
- cmll1000.inf
- cmll1000.lng
- cmll1001.chm
- cmll1001.inf
- cmll1001.lng
- cmll1012.inf
- cmll1012.lng
- cmls10.dll
- cmls1000.lng
- cmls1001.lng
- cmls1012.lng
- Cmmx01.dll
- Cmpr10.dll
- Cmut10.dll

We wish you an easy and successful work with ensochemLab

**The ensochemLab Product Team**

